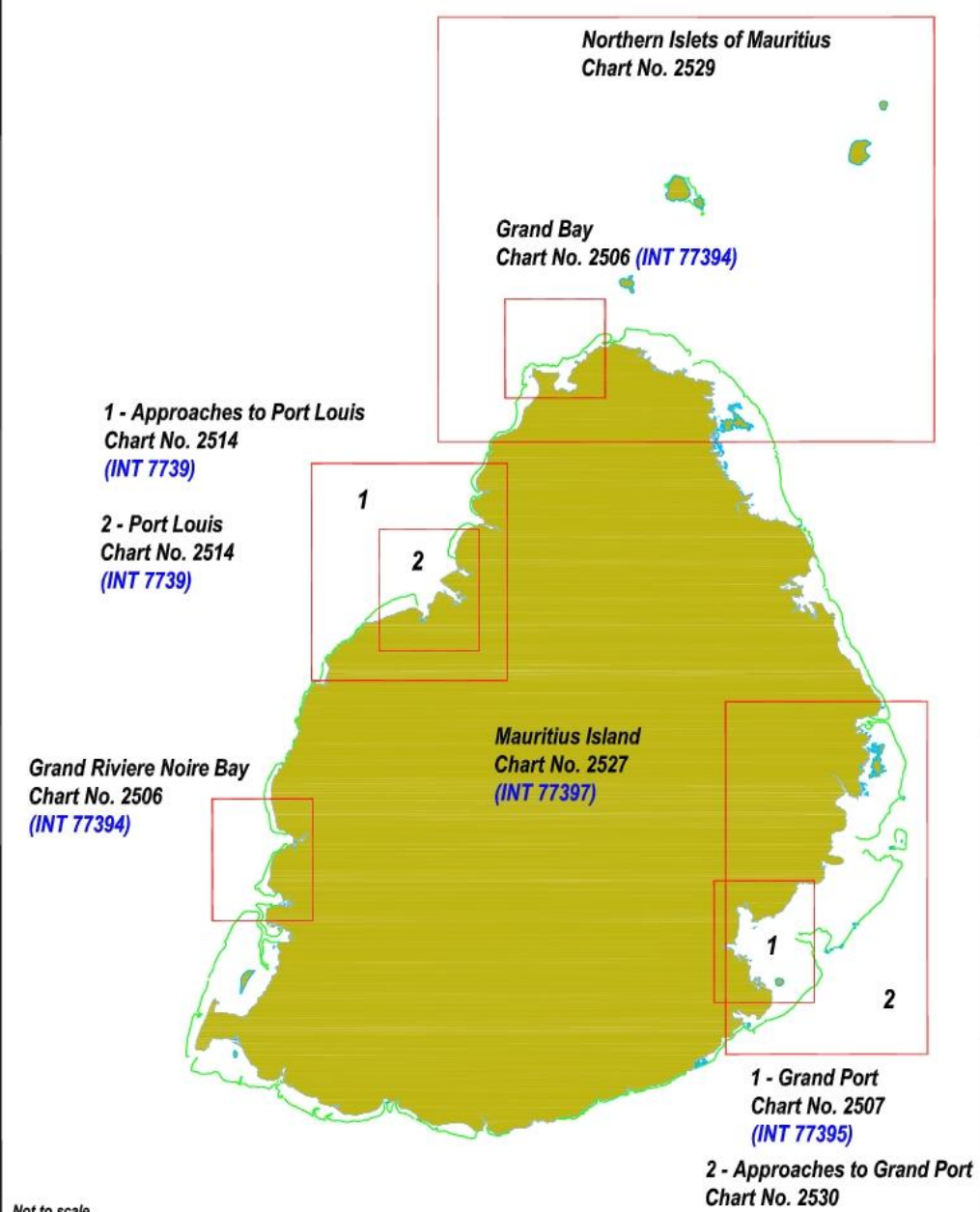
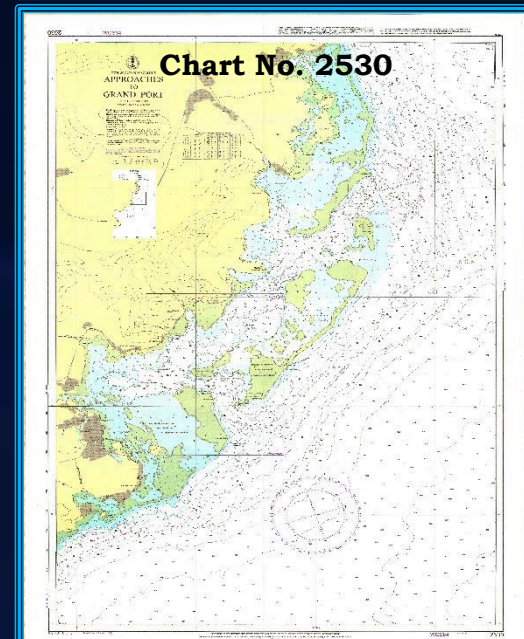
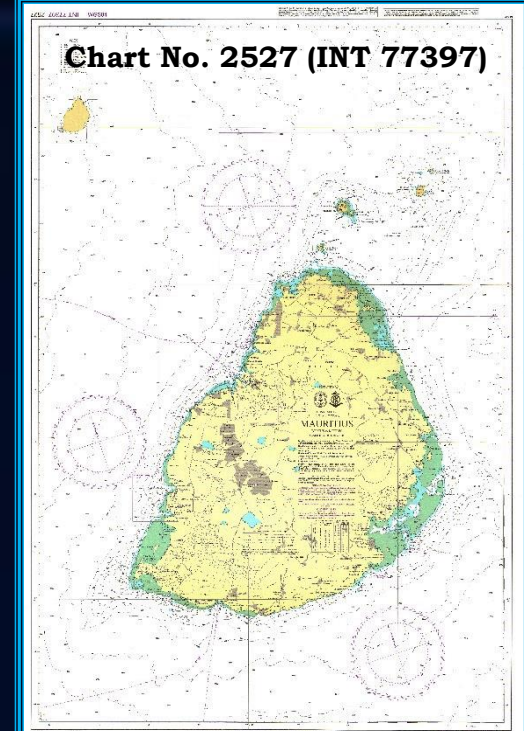
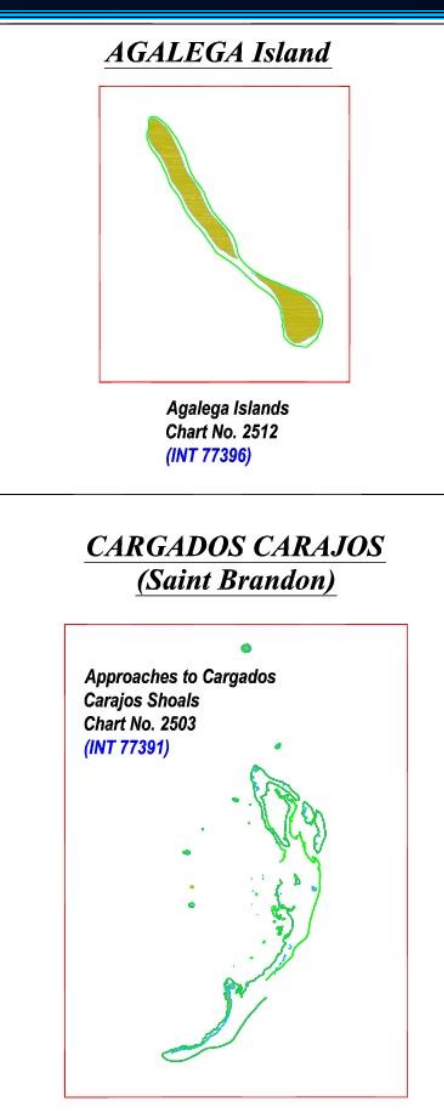
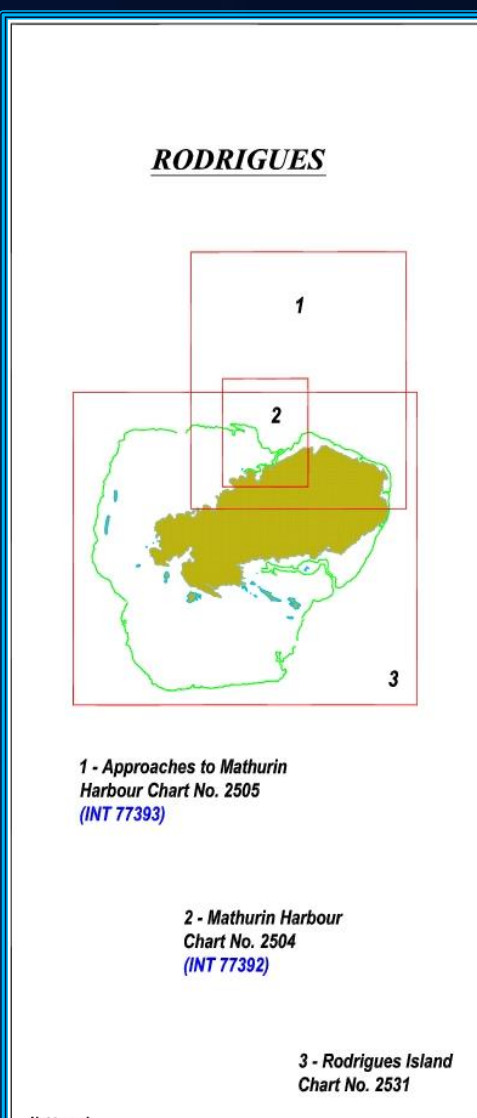


MAURITIUS

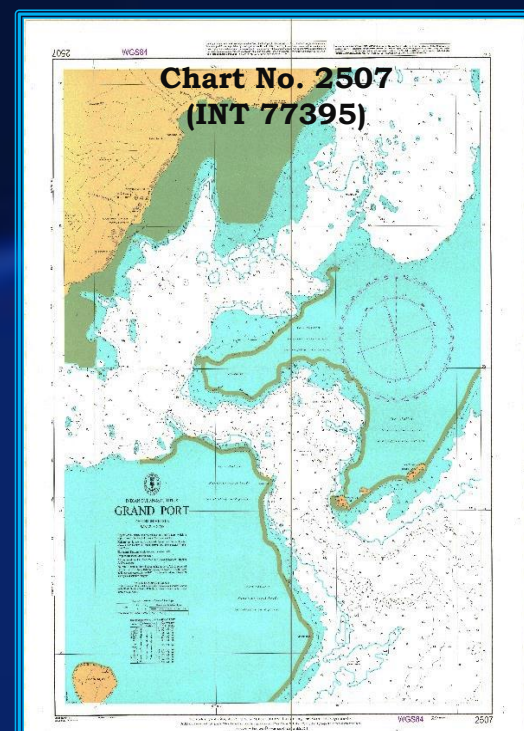
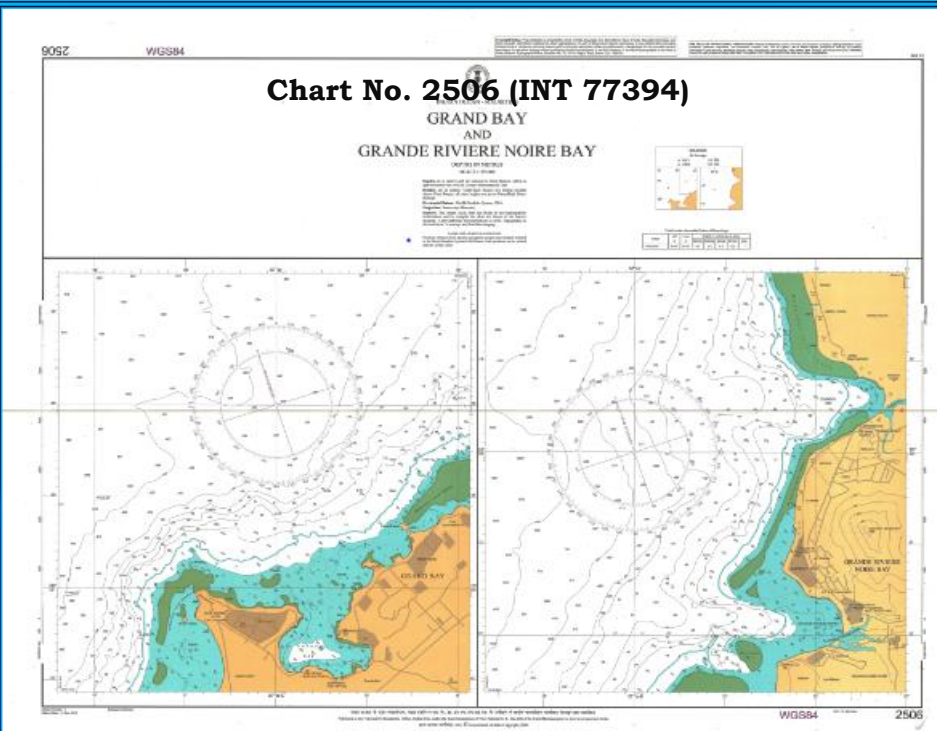
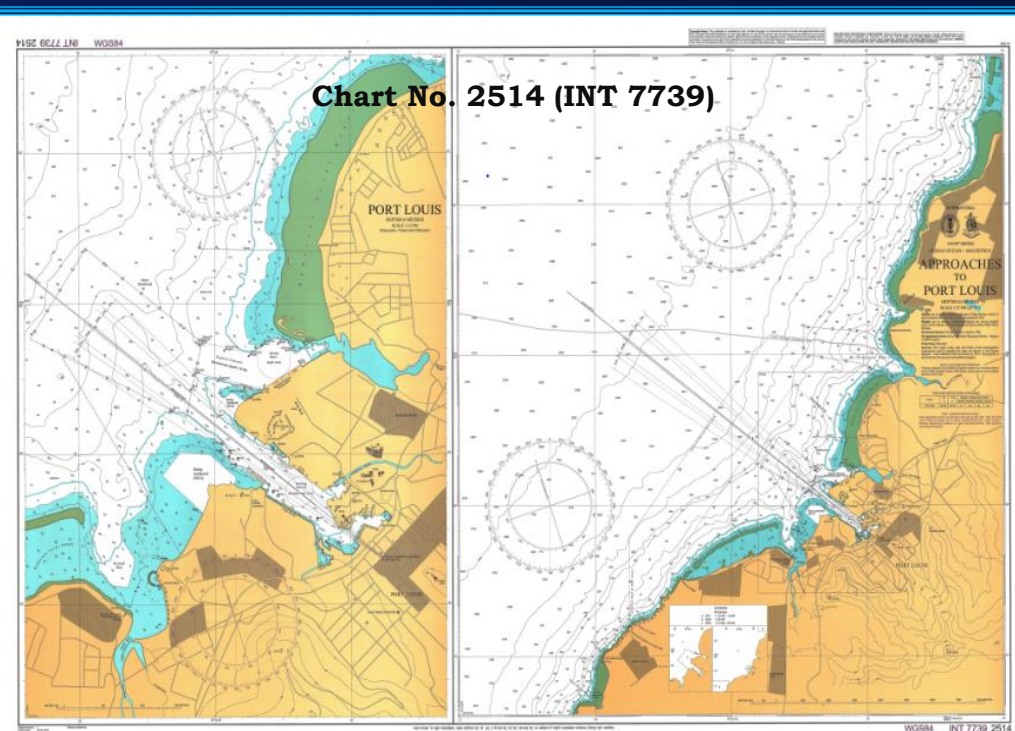


AVAILABLE CHARTS & ENCs



| Chart No. 2527 (INT 77397) | Mauritius |
|----------------------------|------------------|
| Geographic Location | Mauritius Island |
| North Latitude | 19° 35.40' S |
| South Latitude | 20° 41.60' S |
| East Longitude | 57° 55.60' E |
| West Longitude | 57° 09.00' E |
| Scale | 1 : 125 000 |
| Projection | Mercator |
| Publication Date | Oct-19 |
| Edition Date | 15-Oct-19 |
| ENC Number | IN32527M |

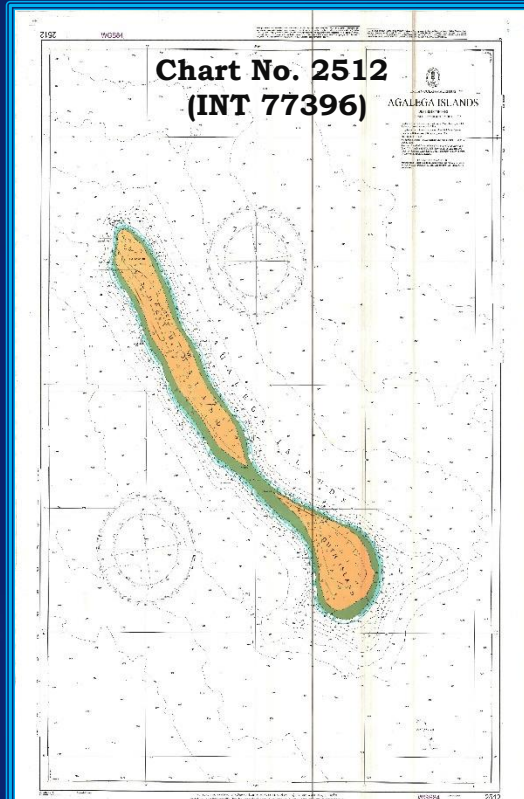
| Chart No. 2530 | Approaches to Grand Port |
|---------------------|--------------------------|
| Geographic Location | Mauritius Island |
| North Latitude | 20° 14.00' S |
| South Latitude | 20° 30.00' S |
| East Longitude | 57° 52.50' S |
| West Longitude | 57° 41.50' S |
| Scale | 1 : 30 000 |
| Projection | Mercator |
| Publication Date | Mar-20 |
| Edition Date | 31-Mar-20 |
| ENC Number | IN52530A |



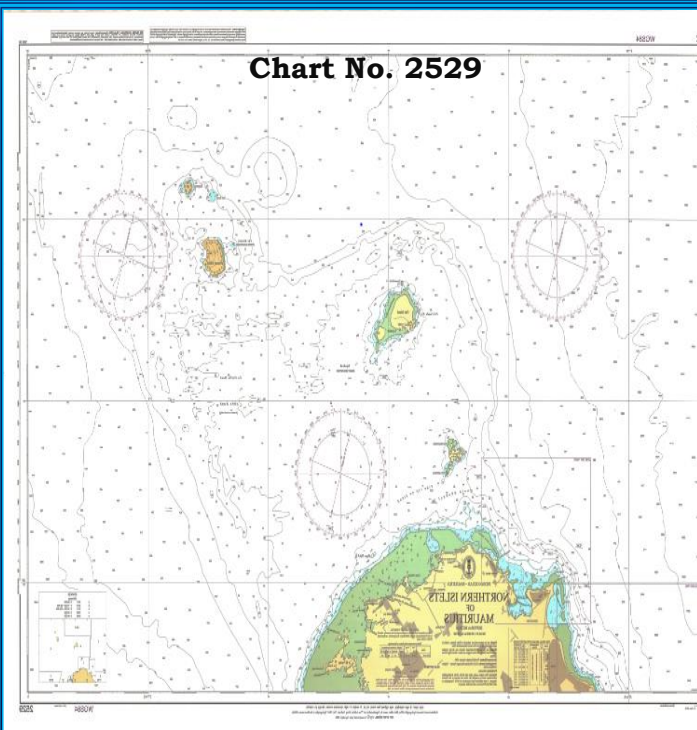
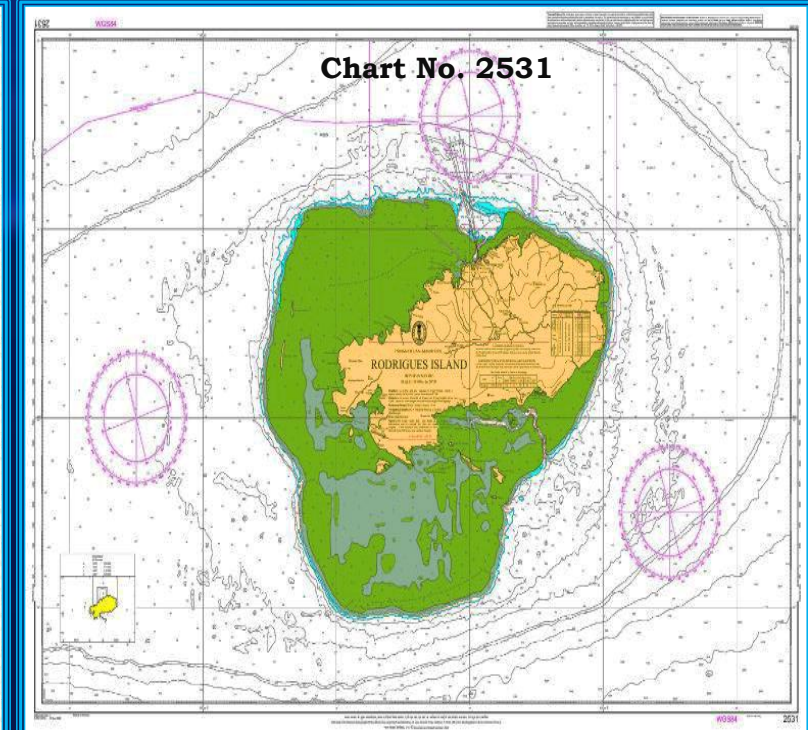
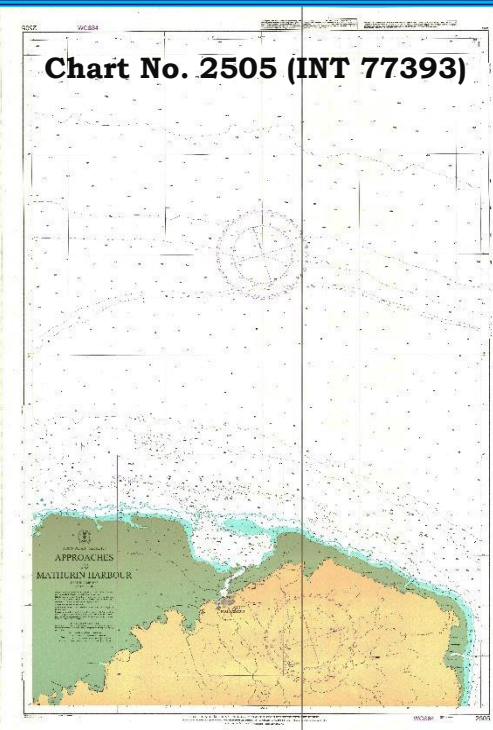
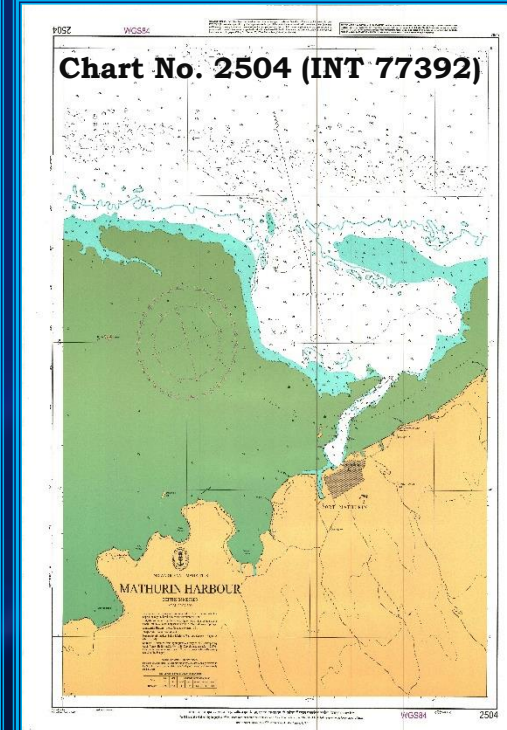
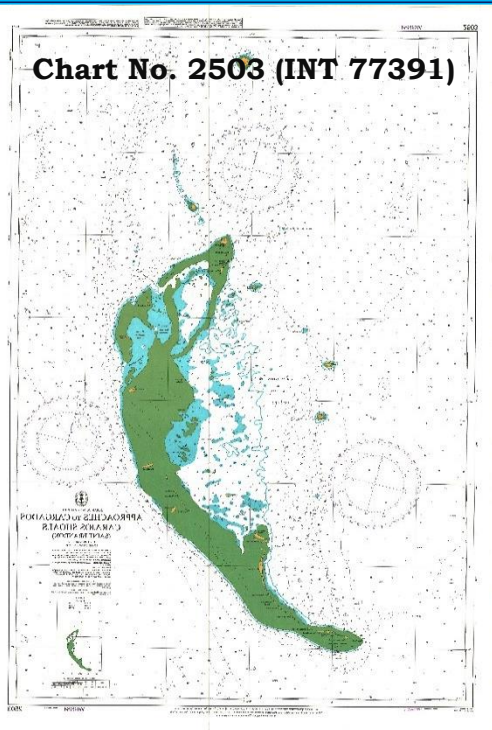
| Chart No. 2507 (INT 77395) | Grand Port |
|----------------------------|---------------------|
| Geographic Location | Mauritius Island |
| North Latitude | 20° 20.90' S |
| South Latitude | 20° 25.35' S |
| East Longitude | 57° 47.20' E |
| West Longitude | 57° 43.75' E |
| Scale | 1 : 12 500 |
| Projection | Transverse Mercator |
| Publication Date | Feb-20 |
| Edition Date | 29-Feb-20 |
| ENC Number | IN62507P |

| Chart No. 2514 (INT 7739) | Port Louis | Approaches to Port Louis |
|---------------------------|---------------------|--------------------------------------|
| Geographic Location | Mauritius Island | Geographic Location Mauritius Island |
| North Latitude | 20° 06.35' S | North Latitude 20° 00.04' S |
| South Latitude | 20° 10.75' S | South Latitude 20° 13.16' S |
| East Longitude | 57° 30.70' E | East Longitude 57° 33.00' E |
| West Longitude | 57° 27.60' E | West Longitude 57° 21.00' E |
| Scale | 1 : 12 500 | Scale 1 : 37 500 |
| Projection | Transverse Mercator | Projection Mercator |
| Publication Date | Oct-18 | Publication Date Oct-18 |
| Edition Date | 15-Oct-18 | Edition Date 15-Oct-18 |
| ENC Number | IN62514P | ENC Number IN52514A |

| Chart No. 2506 (INT 77394) | Grand Bay | Grand Riviere Noire Bay |
|----------------------------|------------------|--------------------------------------|
| Geographic Location | Mauritius Island | Geographic Location Mauritius Island |
| North Latitude | 19° 56.56' S | North Latitude 20° 18.04' S |
| South Latitude | 20° 01.13' S | South Latitude 20° 22.62' S |
| East Longitude | 57° 36.14' E | East Longitude 57° 23.00' E |
| West Longitude | 57° 31.60' E | West Longitude 57° 18.35' E |
| Scale | 1 : 25 000 | Scale 1 : 25 000 |
| Projection | Mercator | Projection Mercator |
| Publication Date | Jan-17 | Publication Date Jan-17 |
| Edition Date | 31-Jan-17 | Edition Date 31-Jan-17 |
| ENC Number | IN52506D | ENC Number IN52506B |



| Chart No. 2512 (INT 77396) | Agalega Islands |
|----------------------------|-----------------|
| Geographic Location | Agalega Islands |
| North Latitude | 10° 15.90' S |
| South Latitude | 10° 33.60' S |
| East Longitude | 56° 45.45' E |
| West Longitude | 56° 33.35' E |
| Scale | 1 : 37 500 |
| Projection | Mercator |
| Publication Date | Jan-17 |
| Edition Date | 31-Jan-17 |
| ENC Number | IN52512I |



| Chart No. 2503 (INT 77391) | Approaches to Cargados Carajos Shoals (Saint Brandon) |
|----------------------------|---|
| Geographic Location | Cargados Carajos Shoals |
| North Latitude | 16° 13.00' S |
| South Latitude | 16° 53.00' S |
| East Longitude | 59° 49.00' E |
| West Longitude | 59° 22.00' E |
| Scale | 1 : 75 000 |
| Projection | Mercator |
| Publication Date | Dec-16 |
| Edition Date | 15-Dec-16 |
| ENC Number | IN42503S |

| Chart No. 2504 (INT 77392) | Mathurin Harbour |
|----------------------------|---------------------|
| Geographic Location | Rodrigues Island |
| North Latitude | 19° 38.00' S |
| South Latitude | 19° 42.40' S |
| East Longitude | 63° 26.43' E |
| West Longitude | 63° 23.00' E |
| Scale | 1 : 12 500 |
| Projection | Transverse Mercator |
| Publication Date | Dec-20 |
| Edition Date | 15-Dec-20 |
| ENC Number | IN62504H |

| Chart No. 2505 (INT 77393) | Approaches to Mathurin Harbour |
|----------------------------|--------------------------------|
| Geographic Location | Rodrigues Island |
| North Latitude | 19° 29.69' S |
| South Latitude | 19° 43.00' S |
| East Longitude | 63° 30.50' E |
| West Longitude | 63° 21.25' E |
| Scale | 1 : 25 000 |
| Projection | Transverse Mercator |
| Publication Date | Dec-20 |
| Edition Date | 15-Dec-20 |
| ENC Number | IN52505T |

| Chart No. 2531 | Rodrigues Island |
|---------------------|------------------|
| Geographic Location | Rodrigues Island |
| North Latitude | 19° 52.50' S |
| South Latitude | 19° 35.00' S |
| East Longitude | 63° 09.00' E |
| West Longitude | 63° 37.00' E |
| Scale | 1 : 50 000 |
| Projection | Mercator |
| Publication Date | Dec-20 |
| Edition Date | 15-Dec-20 |
| ENC Number | IN42531R |

| Chart No. 2529 | Northern Islets of Mauritius |
|---------------------|------------------------------|
| Geographic Location | Mauritius Island |
| North Latitude | 19° 45.50' S |
| South Latitude | 20° 03.00' S |
| East Longitude | 57° 55.00' E |
| West Longitude | 57° 27.00' E |
| Scale | 1 : 50 000 |
| Projection | Mercator |
| Publication Date | Dec-18 |
| Edition Date | 31-Dec-18 |
| ENC Number | IN42529N |