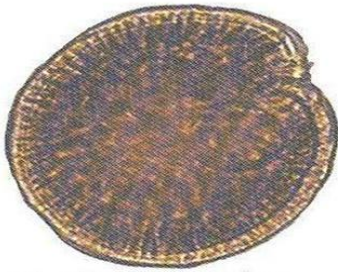
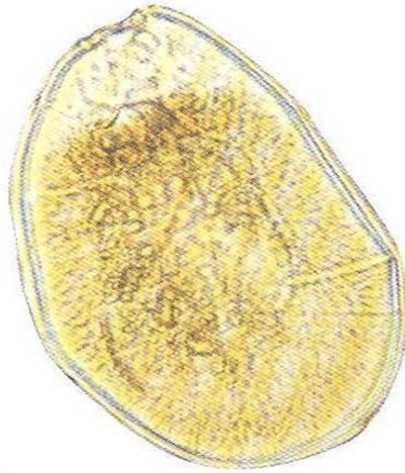


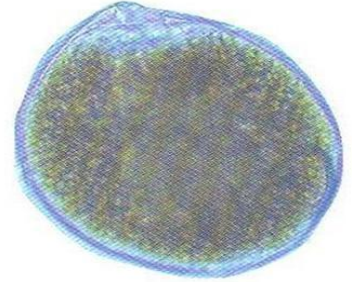
COMMON SPECIES OF HARMFUL DINOFLAGELLATES



Gambierdiscus toxicus
L : 50 - 120 μm



Ostreopsis mascarenensis
L : 155 - 178 μm



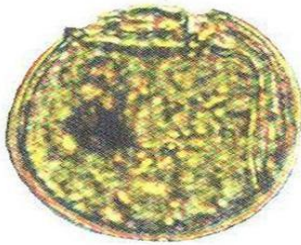
Ostreopsis siamensis
L : 108-123 μm



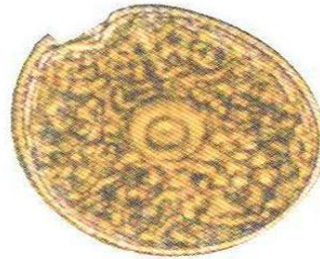
Prorocentrum lima
L : 35 - 50 μm



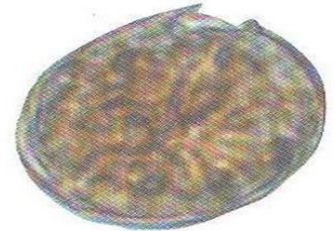
Ostreopsis ovata
L : 47 - 55 μm



Sinophysis sp.
L : 40-50 μm



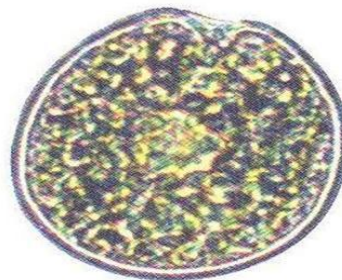
Prorocentrum hoffmanianum
L : 45 - 55 μm



Coolia sp.
L : 23 - 50 μm



Lyngbya sp.
L : qq cm



Prorocentrum concavum
L : 50-55 μm



Amphidinium sp.
L : 20 - 50 μm



Amphidinium carterae
L : 10 - 20 μm